



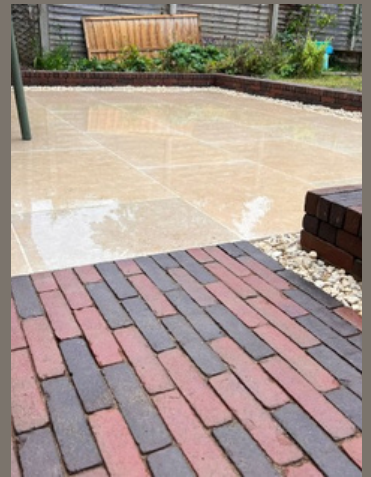
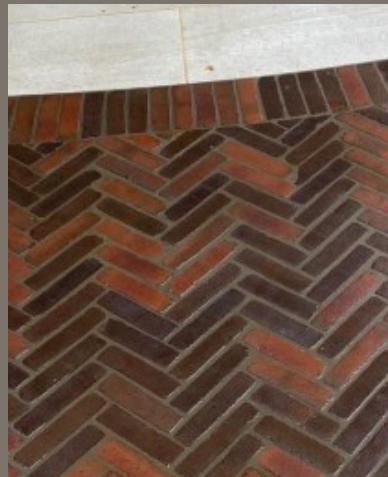
Alfaton UWF Tumbled Clay Pavers TM

Unleash your design vision with Alfaton Clay Pavers. These exceptional pavers are a top choice among discerning garden designers and landscapers seeking to create both classic and contemporary outdoor spaces.

The rich, earthy palette of reds, browns, terracottas, buffs, and greys offers endless possibilities for customization. Whether you're crafting a timeless heritage garden or a bold modern statement, Alfaton's tumbled finish adds character and depth.

Renowned for their consistent quality, these durable clay pavers provide a strong foundation for any project. Our case studies showcase their versatility, proving that Alfaton can transform a space while delivering exceptional value.

Experience the difference Weinerberger quality can make. Let Alfaton be the canvas for your next design triumph.



Product Information

➤ Dimensions:

➤ L: 200mm W: 50mm D: 60mm

➤ Pack Size: 1040 units, 1250-1460 Kg per pack

➤ Individual Net Weight: 1.24Kg

➤ Coverage: Laid on edge with 3mm joint, 10.4m² per pack

Laid on bed with 3mm joint, 12.4m² per pack

➤ Texture: Sanded

➤ Edge Detail: Tumbled

➤ Technical Properties to BS EN 1344

➤ Dimensional deviation (range): R1

➤ Durability (Freeze/thaw resistance): FP100

➤ Transverse breaking load: T4

➤ Abrasion resistance: A1

➤ Unpolished slip/skid resistance (USRV): U3

➤ Availability and Delivery

➤ Normally available within 2-3 working days subject to stock levels at the time of ordering.

➤ Price includes, delivery based on weekday, anytime, kerbside pallet line delivery. (Good access and flat surface essential for delivery).

➤ For orders of 7 packs or more, mechanical offload is included within the price subject to vehicle availability at the time of ordering.